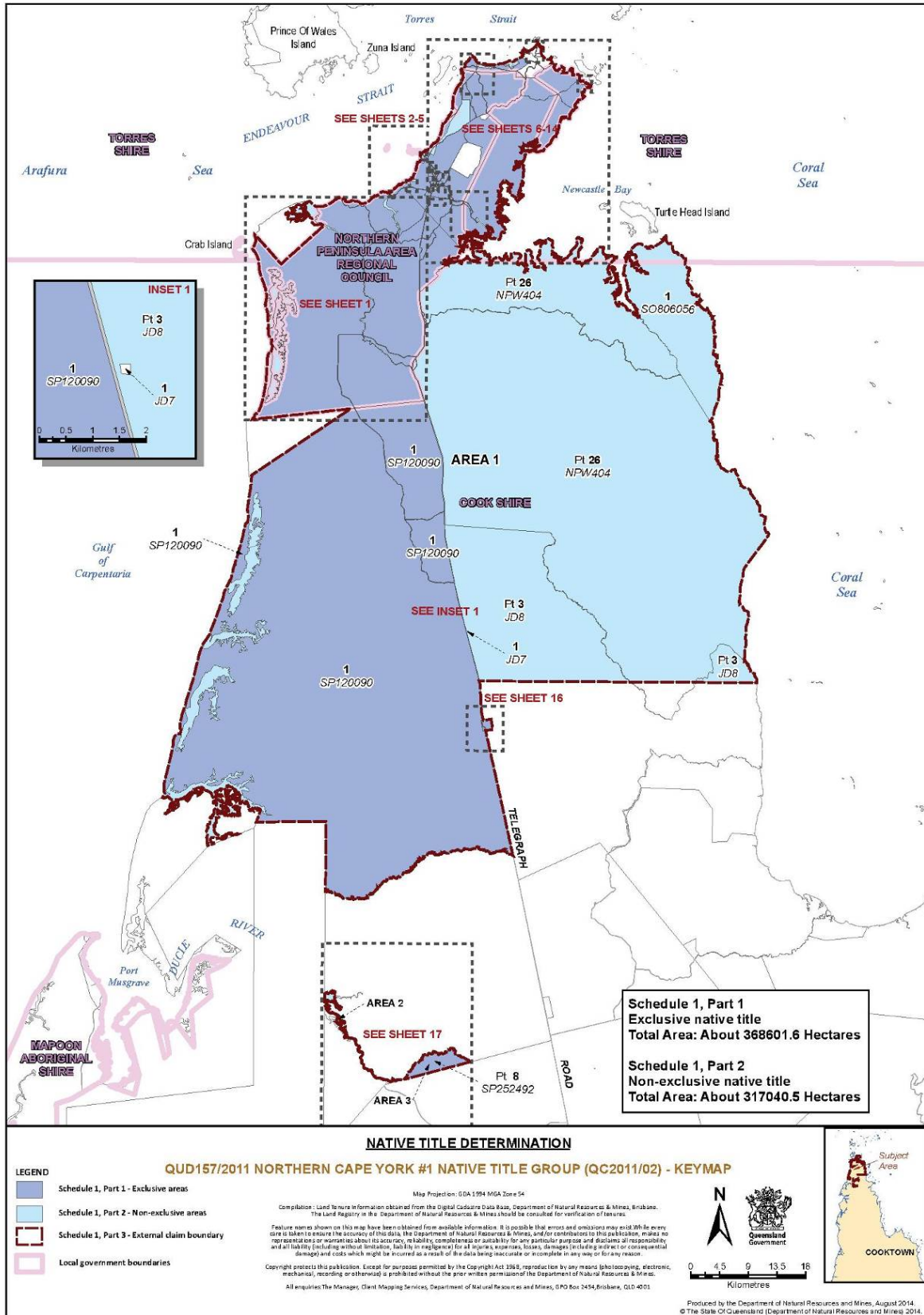
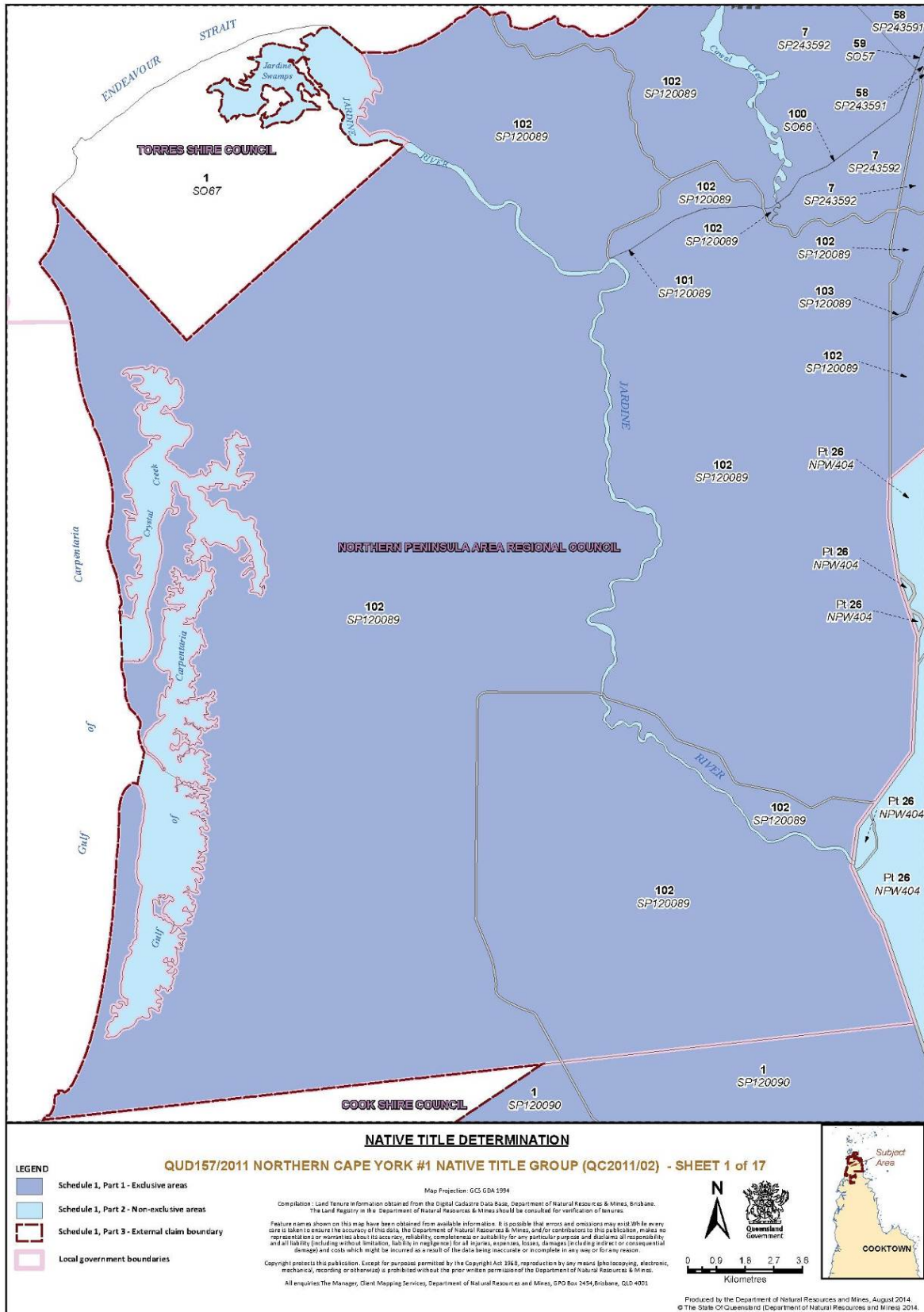
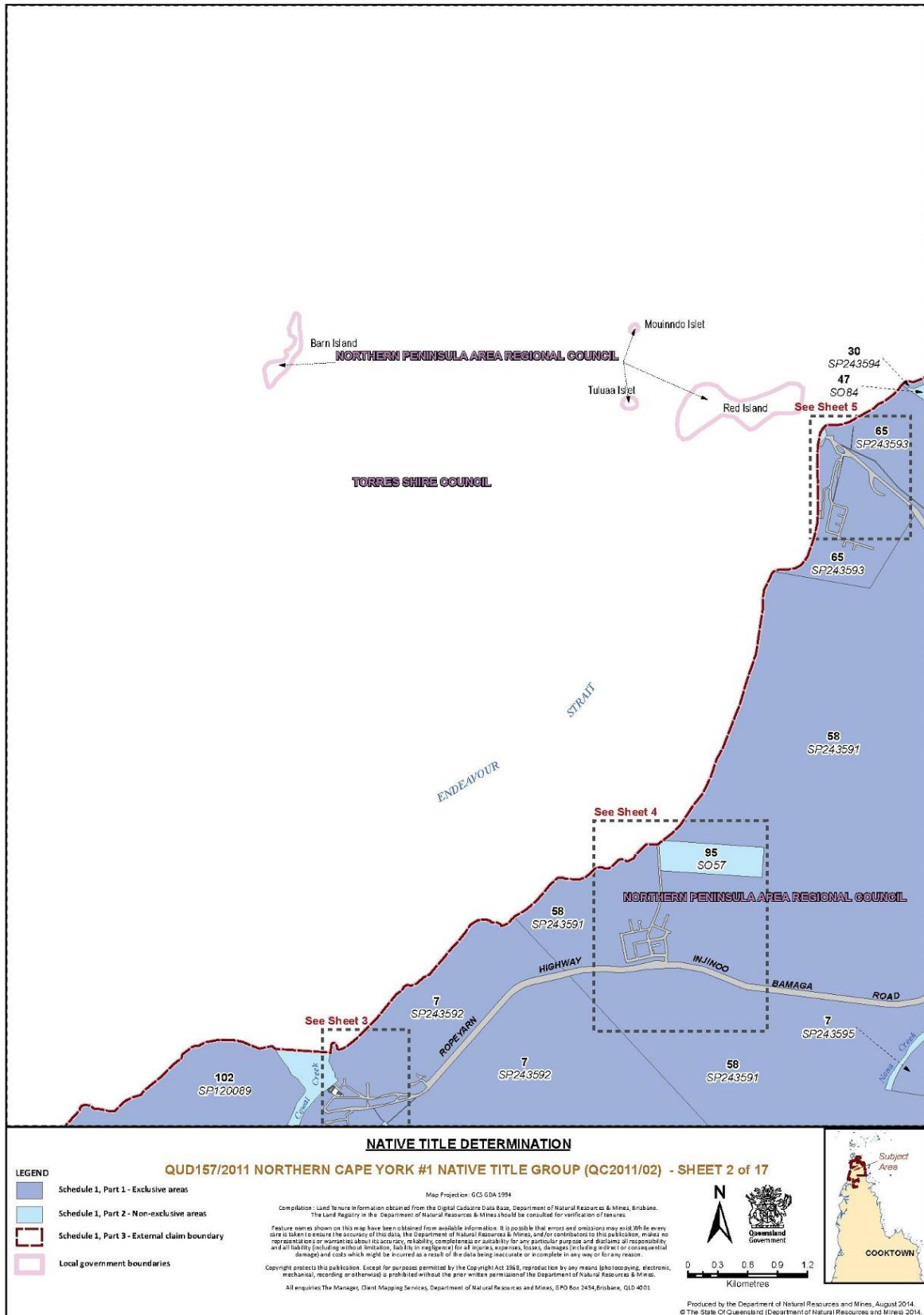


B. MAP OF DETERMINATION AREA





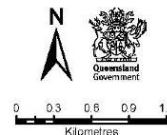


NATIVE TITLE DETERMINATION

QUD157/2011 NORTHERN CAPE YORK #1 NATIVE TITLE GROUP (QC2011/02) - SHEET 2 of 17

- LEGEND**
- Schedule 1, Part 1 - Exclusive areas
 - Schedule 1, Part 2 - Non-exclusive areas
 - Schedule 1, Part 3 - External claim boundary
 - Local government boundaries

Map Projection: GCS GDA 1994
 Compilation: Used to ensure information obtained from the Digital Cadastre Data Base, Department of Natural Resources & Mines, Brisbane, The Land Registry in the Department of Natural Resources & Mines should be consulted for verification of features.
 Feature names shown on this map have been obtained from available information. It is possible that errors and omissions may exist. While every care is taken to ensure the accuracy of this data, the Department of Natural Resources & Mines, and for contributors to this publication, makes no representation or warranty as to accuracy, reliability, completeness or suitability for any particular purpose and disclaims all responsibility and all liability (including without limitation, liability in negligence) for all injuries, expenses, losses, damages (including indirect or consequential damages) and costs which might be incurred as a result of the data being inaccurate or incomplete in any way or for any reason.
 Copyright protects this publication. Except for purposes permitted by the Copyright Act 1969, reproduction by any means (including copying, electronic, mechanical, recording or otherwise) is prohibited without the prior written permission of the Department of Natural Resources & Mines.
 All enquiries The Manager, Client Mapping Services, Department of Natural Resources and Mines, GPO Box 2454, Brisbane, QLD 4001.



Produced by the Department of Natural Resources and Mines, August 2014.
 © The State of Queensland (Department of Natural Resources and Mines) 2014.





NATIVE TITLE DETERMINATION

QUD157/2011 NORTHERN CAPE YORK #1 NATIVE TITLE GROUP (QC2011/02) - SHEET 4 of 17

- LEGEND**
- Schedule 1, Part 1 - Exclusive areas
 - Schedule 1, Part 2 - Non-exclusive areas
 - Schedule 1, Part 3 - External claim boundary
 - Local government boundaries

Map Projection: GCS GDA 1994
 Compilation: Used to ensure information obtained from the Digital Cadastre Data Base, Department of Natural Resources & Mines, Brisbane, The Land Registry in the Department of Natural Resources & Mines should be consulted for verification of features.
 Feature names shown on this map have been obtained from available information. It is possible that errors and omissions may exist. While every care is taken to ensure the accuracy of this data, the Department of Natural Resources & Mines, and/or contributors to this publication, makes no representation or warranty about its accuracy, reliability, completeness or suitability for any particular purpose and disclaims all responsibility and all liability (including without limitation, liability in negligence) for all injuries, expenses, losses, damages (including indirect or consequential damages) and costs which might be incurred as a result of the data being inaccurate or incomplete in any way or for any reason.
 Copyright protects this publication. Except for purposes permitted by the Copyright Act 1969, reproduction by any means (including copying, electronic, mechanical, recording or otherwise) is prohibited without the prior written permission of the Department of Natural Resources & Mines.
 All enquiries The Manager, Client Mapping Services, Department of Natural Resources and Mines, GPO Box 2454, Brisbane, QLD 4001.



Produced by the Department of Natural Resources and Mines, August 2014.
 © The State of Queensland (Department of Natural Resources and Mines) 2014.



NATIVE TITLE DETERMINATION

QUD157/2011 NORTHERN CAPE YORK #1 NATIVE TITLE GROUP (QC2011/02) - SHEET 5 of 17

- LEGEND**
- Schedule 1, Part 1 - Exclusive areas
 - Schedule 1, Part 2 - Non-exclusive areas
 - Schedule 1, Part 3 - External claim boundary
 - Local government boundaries

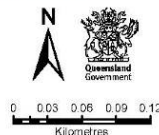
Map Projection: GCS GDA 1994

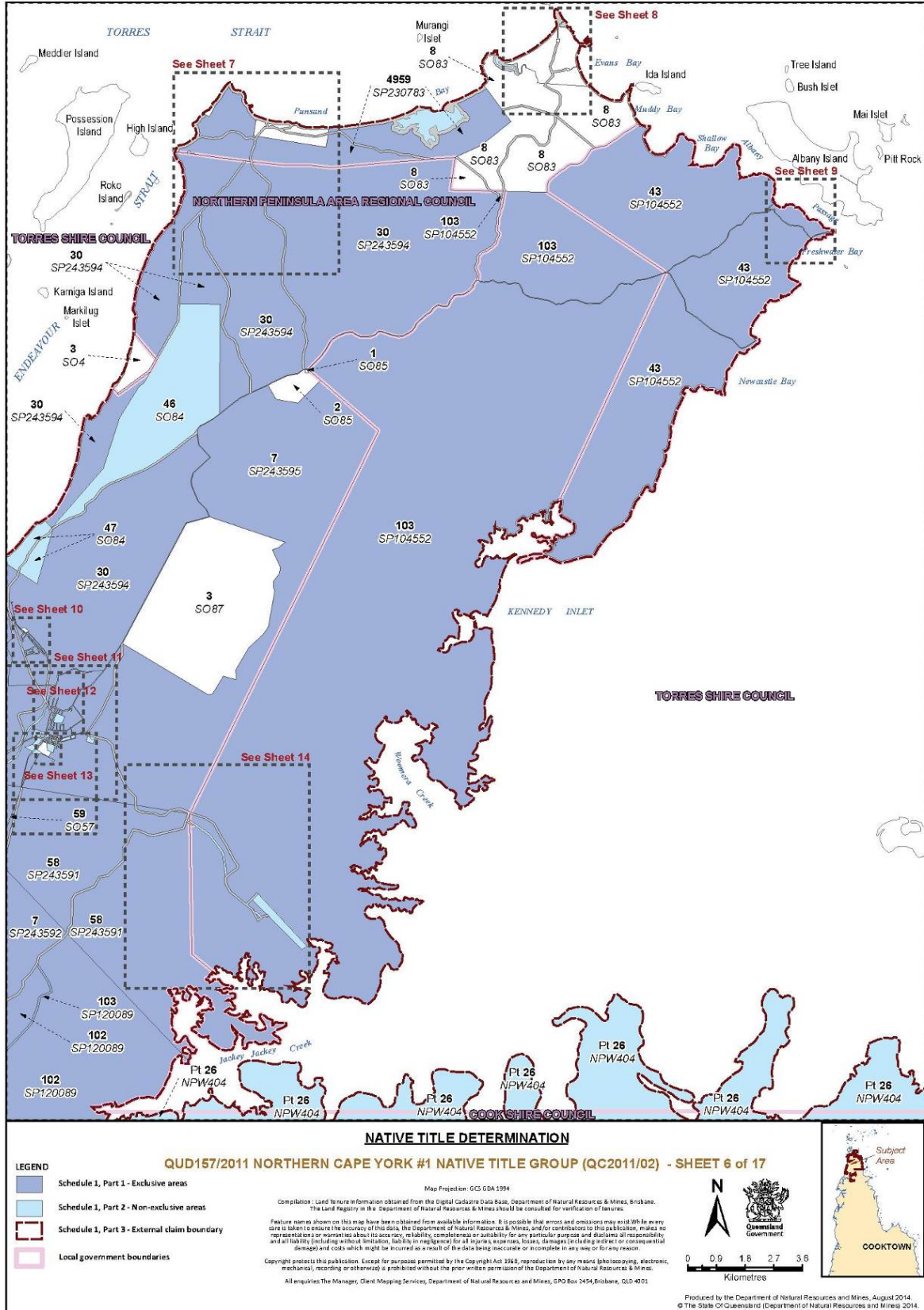
Compilation: Used to ensure information obtained from the Digital Cadastre Data Base, Department of Natural Resources & Mines, Brisbane, and the Land Registry in the Department of Natural Resources & Mines should be consulted for verification of features.

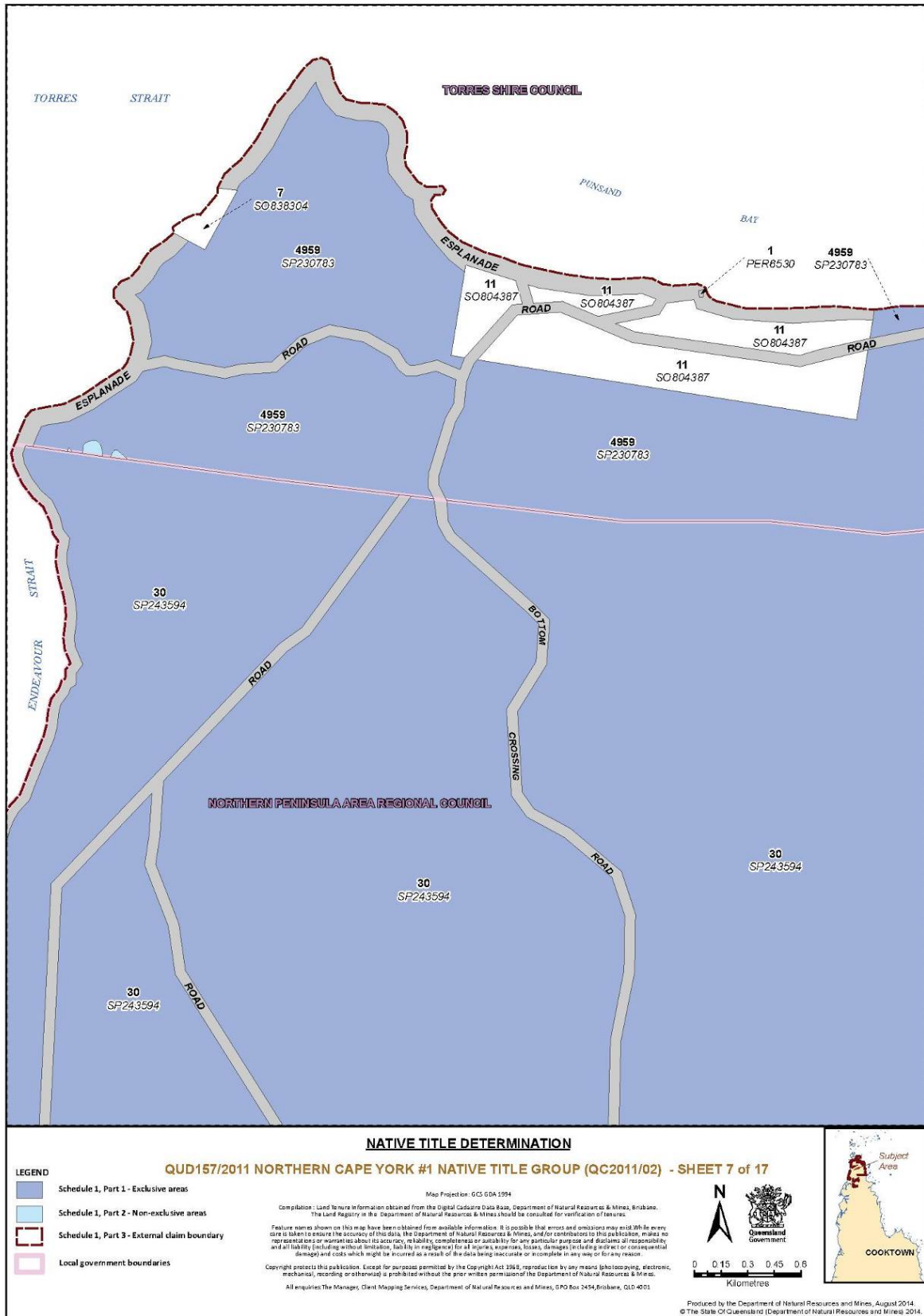
Feature names shown on this map have been obtained from available information. It is possible that errors and omissions may exist. While every care is taken to ensure the accuracy of this data, the Department of Natural Resources & Mines, and for contributors to this publication, makes no representation or warranty about its accuracy, reliability, completeness or availability for any particular purpose and disclaims all responsibility and all liability (including without limitation, liability in negligence) for all injuries, expenses, losses, damages (including indirect or consequential damages) and costs which might be incurred as a result of the data being inaccurate or incomplete in any way or for any reason.

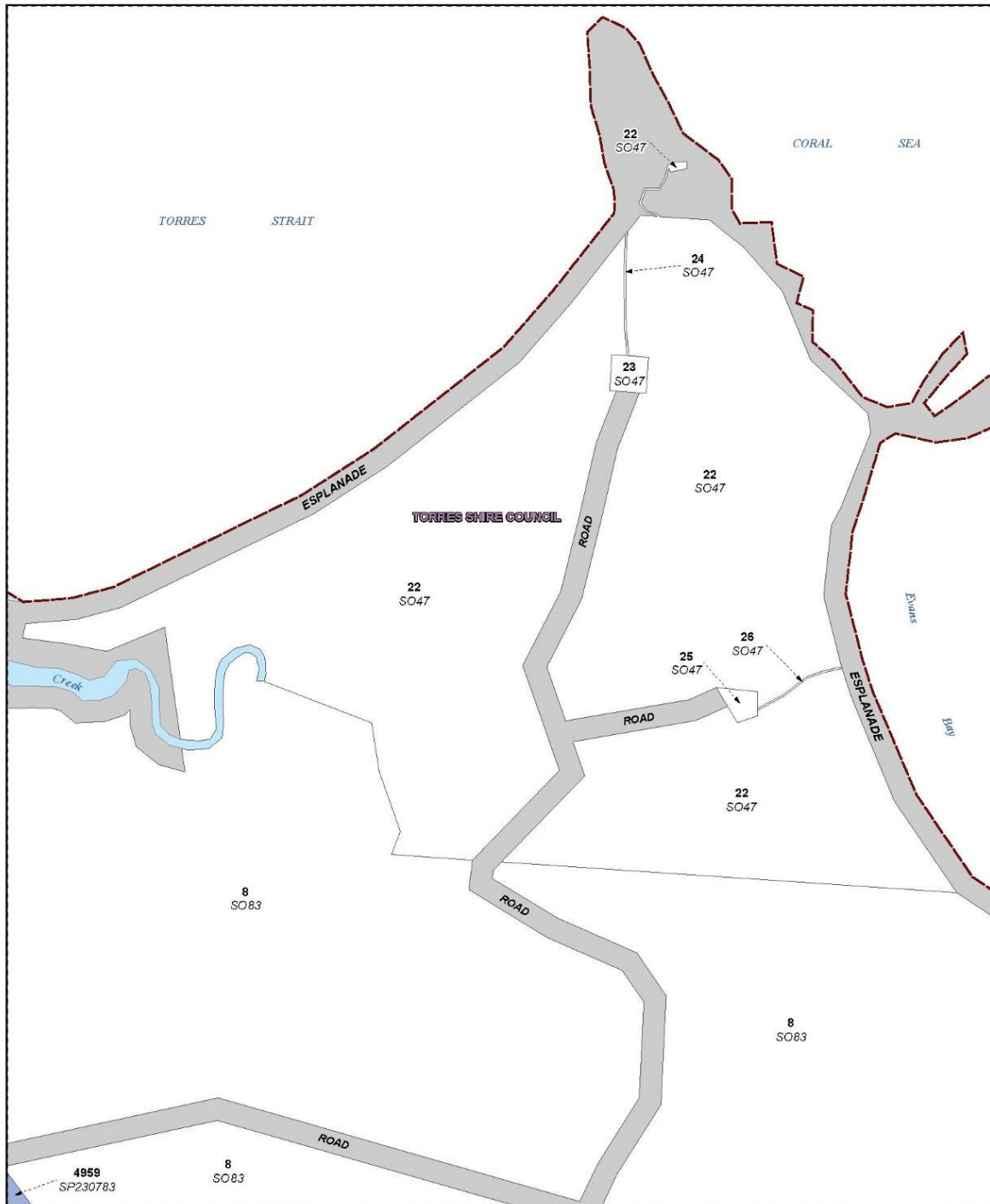
Copyright protects this publication. Except for purposes permitted by the Copyright Act 1969, reproduction by any means (photocopying, electronic, mechanical, recording or otherwise) is prohibited without the prior written permission of the Department of Natural Resources & Mines.

All enquiries The Manager, Client Mapping Services, Department of Natural Resources and Mines, GPO Box 2454, Brisbane, QLD 4001.







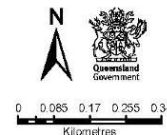


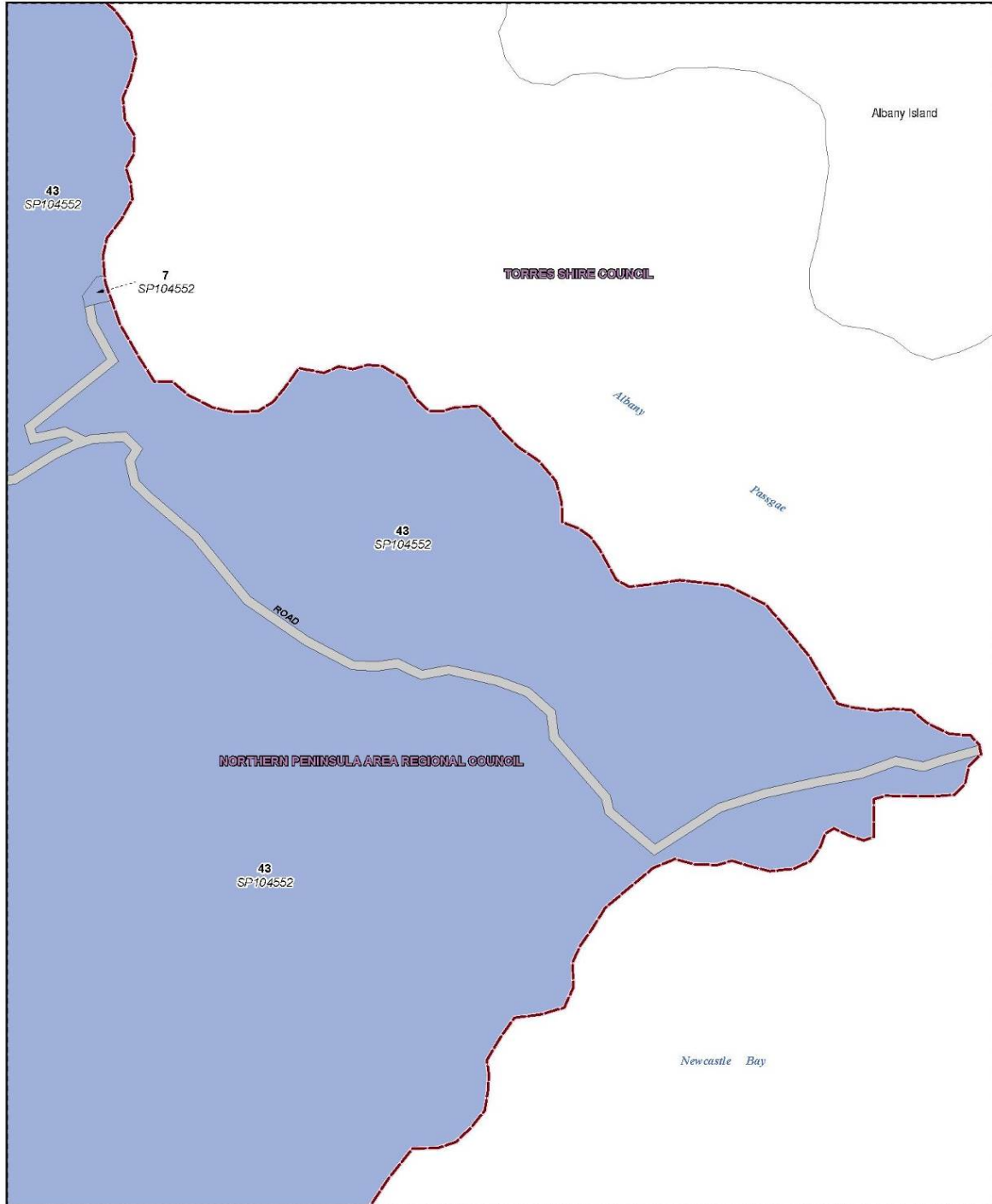
NATIVE TITLE DETERMINATION

QUD157/2011 NORTHERN CAPE YORK #1 NATIVE TITLE GROUP (QC2011/02) - SHEET 8 of 17

- LEGEND**
- Schedule 1, Part 1 - Exclusive areas
 - Schedule 1, Part 2 - Non-exclusive areas
 - Schedule 1, Part 3 - External claim boundary
 - Local government boundaries

Map Projection: GCS GDA 1994
 Compilation: Land tenure information obtained from the Digital Cadastre Data Base, Department of Natural Resources & Mines, Brisbane. The Land Registry in the Department of Natural Resources & Mines should be consulted for verification of features.
 Feature names shown on this map have been obtained from available information. It is possible that errors and omissions may exist. While every care is taken to ensure the accuracy of this data, the Department of Natural Resources & Mines, and/or contributors to this publication, makes no representation or warranty as to accuracy, reliability, completeness or suitability for any particular purpose and disclaims all responsibility and all liability (including without limitation, liability in negligence) for all injuries, expenses, losses, damages (including indirect or consequential) and costs which might be incurred as a result of the data being inaccurate or incomplete in any way or for any reason.
 Copyright protects this publication. Except for purposes permitted by the Copyright Act 1969, reproduction by any means (including electronic, mechanical, recording or otherwise) is prohibited without the prior written permission of the Department of Natural Resources & Mines.
 All enquiries The Manager, Client Mapping Services, Department of Natural Resources and Mines, GPO Box 2454, Brisbane, QLD 4001.





NATIVE TITLE DETERMINATION

QUD157/2011 NORTHERN CAPE YORK #1 NATIVE TITLE GROUP (QC2011/02) - SHEET 9 of 17

LEGEND

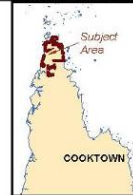
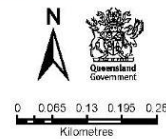
- Schedule 1, Part 1 - Exclusive areas
- Schedule 1, Part 2 - Non-exclusive areas
- Schedule 1, Part 3 - External claim boundary
- Local government boundaries

Map Projection: GCS GDA 1994

Compilation: Land tenure information obtained from the Digital Cadastre Data Base, Department of Natural Resources & Mines, Brisbane. The Land Registry in the Department of Natural Resources & Mines should be consulted for verification of features.

Feature names shown on this map have been obtained from available information. It is possible that errors and omissions may exist. While every care is taken to ensure the accuracy of this data, the Department of Natural Resources & Mines, and/or contributors to this publication, makes no representation or warranty as to accuracy, reliability, completeness or suitability for any particular purpose and disclaims all responsibility and all liability (including without limitation, liability in negligence) for all injuries, expenses, losses, damages (including indirect or consequential damages) and costs which might be incurred as a result of the data being inaccurate or incomplete in any way or for any reason.

Copyright protects this publication. Except for purposes permitted by the Copyright Act 1969, reproduction by any means (including electronic, mechanical, recording or otherwise) is prohibited without the prior written permission of the Department of Natural Resources & Mines. All enquiries The Manager, Client Mapping Services, Department of Natural Resources and Mines, GPO Box 2454, Brisbane, QLD 4001.



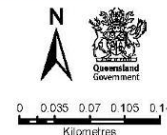


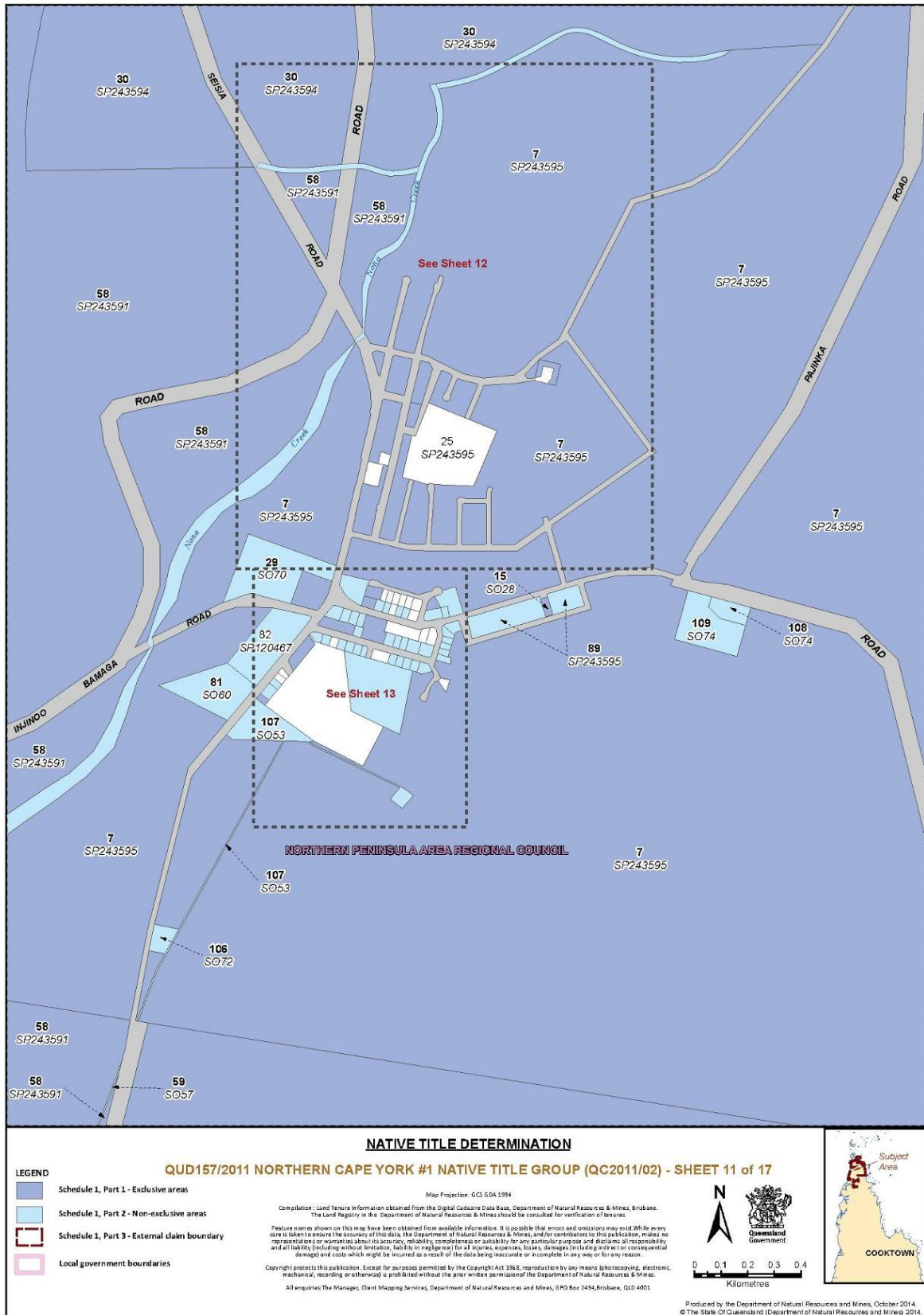
NATIVE TITLE DETERMINATION

QUD157/2011 NORTHERN CAPE YORK #1 NATIVE TITLE GROUP (QC2011/02) - SHEET 10 of 17

- LEGEND**
- Schedule 1, Part 1 - Exclusive areas
 - Schedule 1, Part 2 - Non-exclusive areas
 - Schedule 1, Part 3 - External claim boundary
 - Local government boundaries

Map Projection: GCS GDA 1994
 Compilation: Used to ensure information obtained from the Digital Cadastre Data Base, Department of Natural Resources & Mines, Brisbane, The Land Registry in the Department of Natural Resources & Mines should be consulted for verification of features.
 Feature names shown on this map have been obtained from available information. It is possible that errors and omissions may exist. While every care is taken to ensure the accuracy of this data, the Department of Natural Resources & Mines, and for contributors to this publication, makes no representation or warranty about its accuracy, reliability, completeness or suitability for any particular purpose and disclaims all responsibility and all liability (including without limitation, liability in negligence) for all injuries, expenses, losses, damages (including indirect or consequential damages) and costs which might be incurred as a result of the data being inaccurate or incomplete in any way or for any reason.
 Copyright protects this publication. Except for purposes permitted by the Copyright Act 1969, reproduction by any means (including electronic, mechanical, recording or otherwise) is prohibited without the prior written permission of the Department of Natural Resources & Mines.
 All enquiries The Manager, Client Mapping Services, Department of Natural Resources and Mines, GPO Box 2454, Brisbane, QLD 4001.





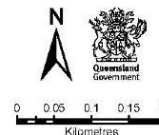


NATIVE TITLE DETERMINATION

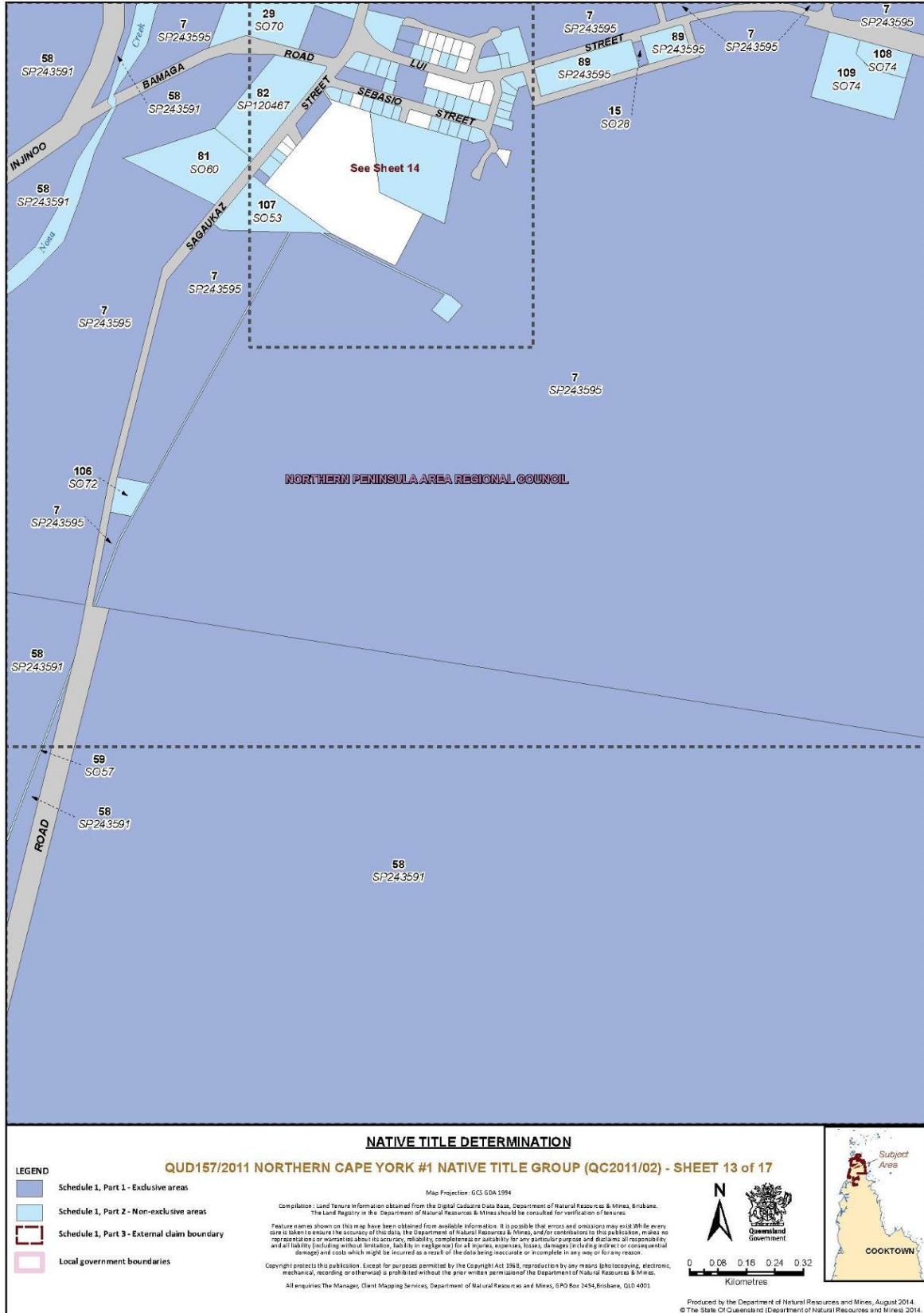
QUD157/2011 NORTHERN CAPE YORK #1 NATIVE TITLE GROUP (QC2011/02) - SHEET 12 of 17

- LEGEND**
- Schedule 1, Part 1 - Exclusive areas
 - Schedule 1, Part 2 - Non-exclusive areas
 - Schedule 1, Part 3 - External claim boundary
 - Local government boundaries

Map Projection: GCS GDA 1994
 Compilation: Land tenure information obtained from the Digital Cadastre Data Base, Department of Natural Resources & Mines, Brisbane.
 The Land Registry in the Department of Natural Resources & Mines should be consulted for verification of features.
 Feature names shown on this map have been obtained from available information. It is possible that errors and omissions may exist. While every care is taken to ensure the accuracy of this data, the Department of Natural Resources & Mines, and for contributors to this publication, makes no representation or warranty as to its accuracy, reliability, completeness or suitability for any particular purpose and disclaims all responsibility and all liability (including without limitation, liability in negligence) for all injuries, expenses, losses, damages (including indirect or consequential damages) and costs which might be incurred as a result of the data being inaccurate or incomplete in any way or for any reason.
 Copyright protects this publication. Except for purposes permitted by the Copyright Act 1969, reproduction by any means (including electronic, mechanical, recording or otherwise) is prohibited without the prior written permission of the Department of Natural Resources & Mines.
 All enquiries The Manager, Client Mapping Services, Department of Natural Resources and Mines, GPO Box 2454, Brisbane, QLD 4001.



Produced by the Department of Natural Resources and Mines, October 2014.
 © The State of Queensland (Department of Natural Resources and Mines) 2014.





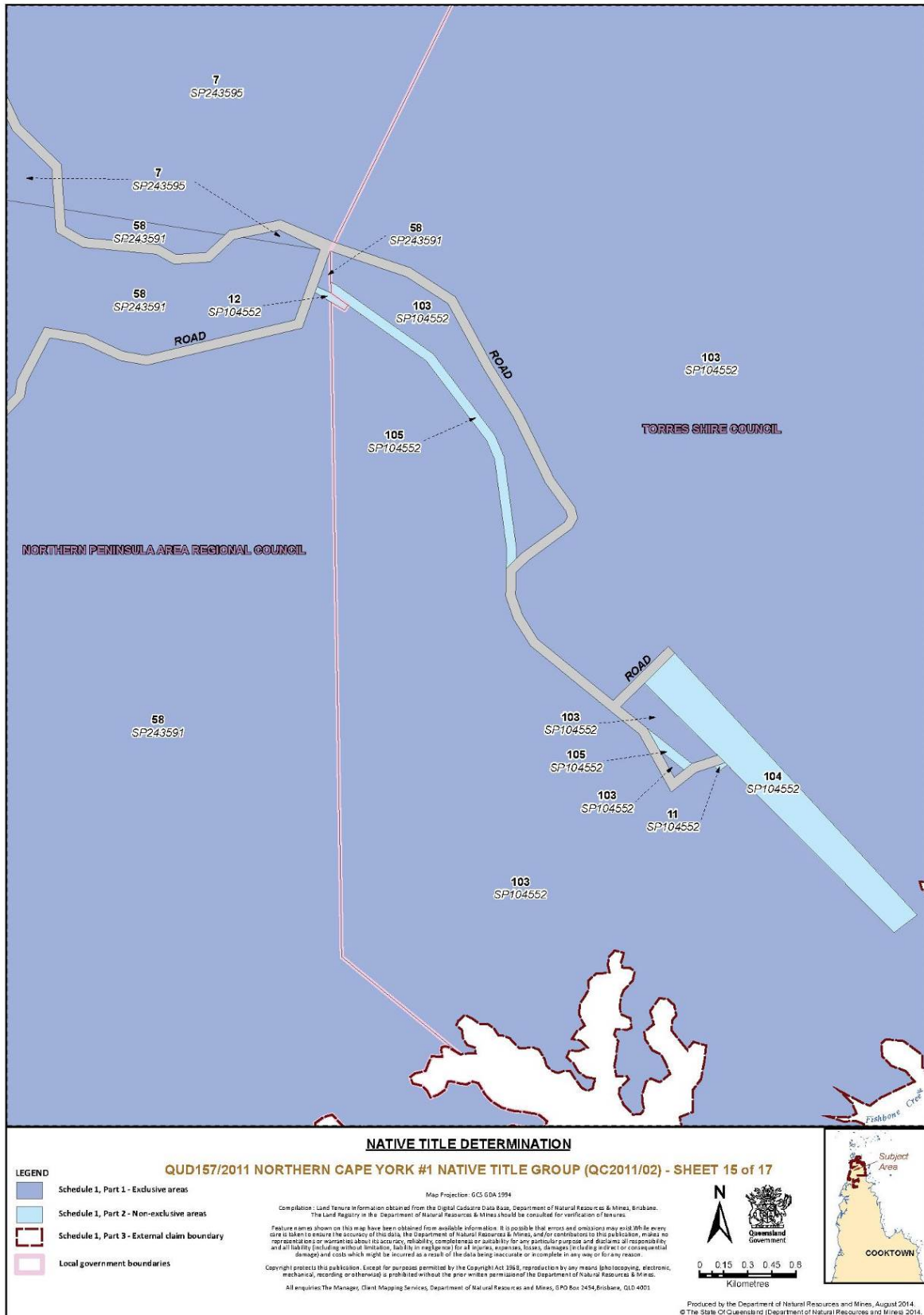
NORTHERN PENINSULA AREA REGIONAL COUNCIL

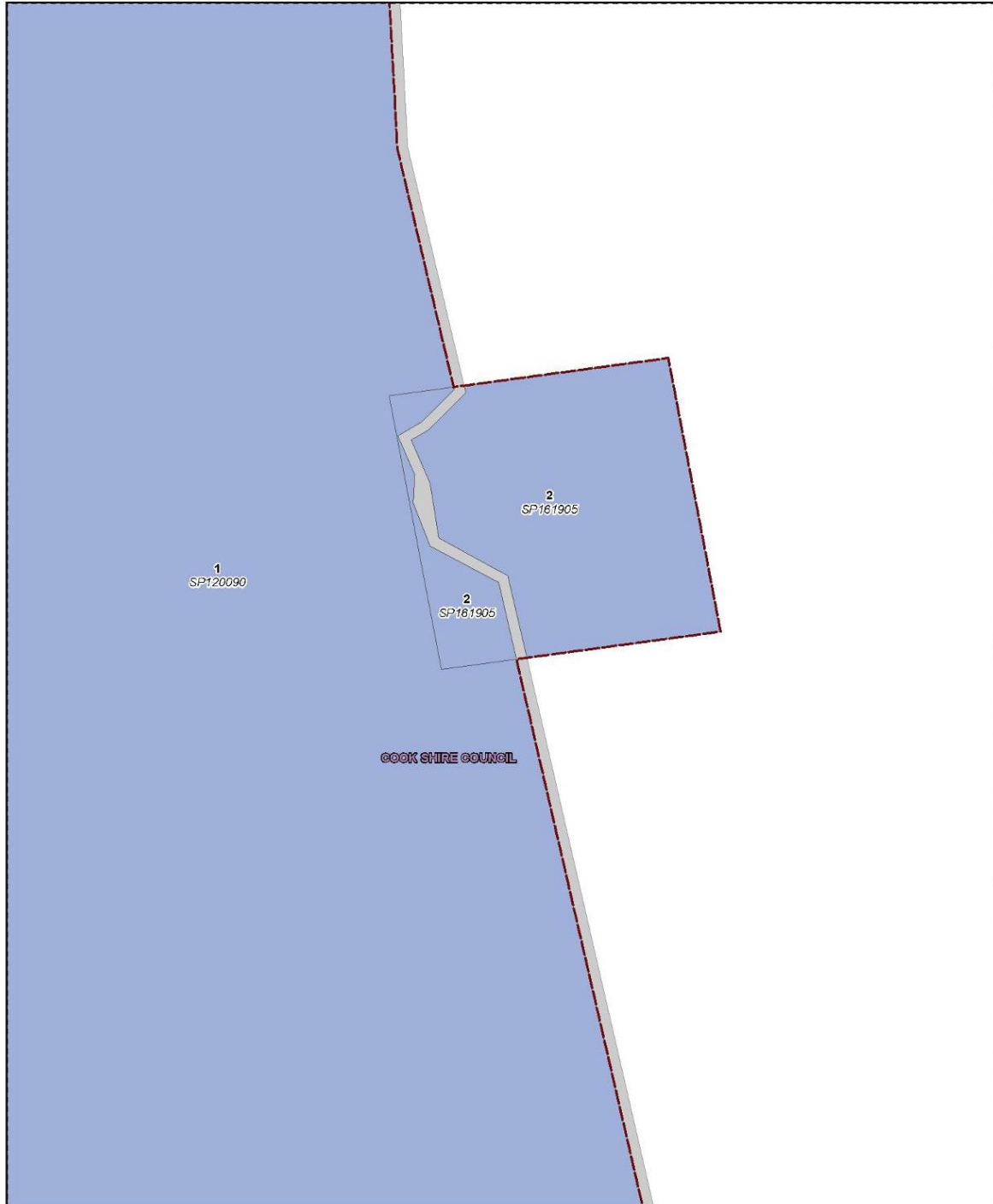
NATIVE TITLE DETERMINATION

QUD157/2011 NORTHERN CAPE YORK #1 NATIVE TITLE GROUP (QC2011/02) - SHEET 14 of 17

- LEGEND**
- Schedule 1, Part 1 - Exclusive areas
 - Schedule 1, Part 2 - Non-exclusive areas
 - Schedule 1, Part 3 - External claim boundary
 - Local government boundaries

Map Projection: GCS GDA 1994
 Compilation: Used to ensure information obtained from the Digital Cadastre Data Base, Department of Natural Resources & Mines, Brisbane. The Land Registry in the Department of Natural Resources & Mines should be consulted for verification of features.
 Feature names shown on this map have been obtained from available information. It is possible that errors and omissions may exist. While every care is taken to ensure the accuracy of this data, the Department of Natural Resources & Mines, and for contributors to this publication, makes no representation or warranty about its accuracy, reliability, completeness or suitability for any particular purpose and disclaims all responsibility and all liability (including without limitation, liability in negligence) for all injuries, expenses, losses, damages (including indirect or consequential damages) and costs which might be incurred as a result of the data being inaccurate or incomplete in any way or for any reason.
 Copyright protects this publication. Except for purposes permitted by the Copyright Act 1969, reproduction by any means (including copying, electronic, mechanical, recording or otherwise) is prohibited without the prior written permission of the Department of Natural Resources & Mines.
 All enquiries The Manager, Client Mapping Services, Department of Natural Resources and Mines, GPO Box 2454, Brisbane, QLD 4001.





NATIVE TITLE DETERMINATION

QUD157/2011 NORTHERN CAPE YORK #1 NATIVE TITLE GROUP (QC2011/02) - SHEET 16 of 17

- LEGEND**
- Schedule 1, Part 1 - Exclusive areas
 - Schedule 1, Part 2 - Non-exclusive areas
 - Schedule 1, Part 3 - External claim boundary
 - Local government boundaries

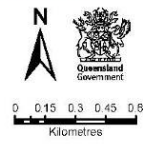
Map Projection: GCS GDA 1994

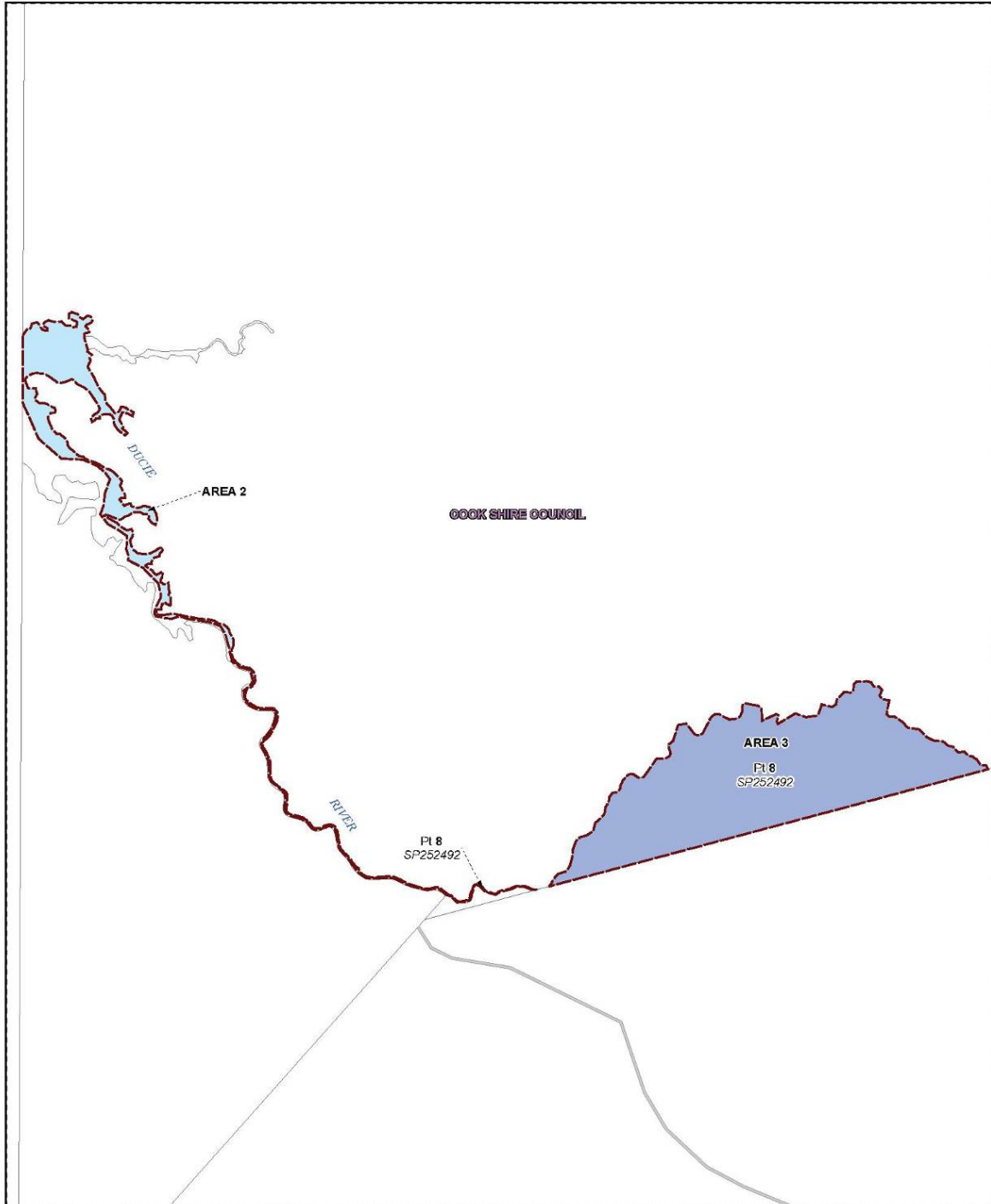
Compilation: Used to ensure information obtained from the Digital Cadastre Data Base, Department of Natural Resources & Mines, Brisbane, The Land Registry in the Department of Natural Resources & Mines should be consulted for verification of features.

Feature names shown on this map have been obtained from available information. It is possible that errors and omissions may exist. While every care is taken to ensure the accuracy of this data, the Department of Natural Resources & Mines, and/or contributors to this publication, makes no representation or warranty about its accuracy, reliability, completeness or suitability for any particular purpose and disclaims all responsibility and all liability (including without limitation, liability in negligence) for all injuries, expenses, losses, damages (including indirect or consequential) and costs which might be incurred as a result of the data being inaccurate or incomplete in any way or for any reason.

Copyright protects this publication. Except for purposes permitted by the Copyright Act 1969, reproduction by any means (photocopying, electronic, mechanical, recording or otherwise) is prohibited without the prior written permission of the Department of Natural Resources & Mines.

All enquiries The Manager, Client Mapping Services, Department of Natural Resources and Mines, GPO Box 2454, Brisbane, QLD 4001.



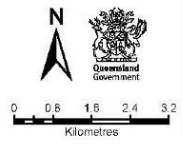


NATIVE TITLE DETERMINATION

QUD157/2011 NORTHERN CAPE YORK #1 NATIVE TITLE GROUP (QC2011/02) - SHEET 17 of 17

- LEGEND**
- Schedule 1, Part 1 - Exclusive areas
 - Schedule 1, Part 2 - Non-exclusive areas
 - Schedule 1, Part 3 - External claim boundary
 - Local government boundaries

Map Projection: GCS GDA 1994
 Compilation: Land tenure information obtained from the Digital Cadastre Data Base, Department of Natural Resources & Mines, Brisbane. The Land Registry in the Department of Natural Resources & Mines should be consulted for verification of features.
 Feature names shown on this map have been obtained from available information. It is possible that errors and omissions may exist. While every care is taken to ensure the accuracy of this data, the Department of Natural Resources & Mines, and/or contributors to this publication, makes no representation or warranty about its accuracy, reliability, completeness or suitability for any particular purpose and disclaims all responsibility and all liability (including without limitation, liability in negligence) for all injuries, expenses, losses, damages (including indirect or consequential damages) and costs which might be incurred as a result of the data being inaccurate or incomplete in any way or for any reason.
 Copyright protects this publication. Except for purposes permitted by the Copyright Act 1969, reproduction by any means (including electronic, mechanical, recording or otherwise) is prohibited without the prior written permission of the Department of Natural Resources & Mines.
 All enquiries The Manager, Client Mapping Services, Department of Natural Resources and Mines, GPO Box 2454, Brisbane, QLD 4001



Produced by the Department of Natural Resources and Mines, August 2014.
 © The State of Queensland (Department of Natural Resources and Mines) 2014.